


**WORKING GROUP on
MARINE GEOSPATIAL INFORMATION,
2nd EXPERT MEETING
Rostock, Warnemunde, Germany
24th – 28th FEBRUARY 2020**



UN-GGIM
UNITED NATIONS INITIATIVE ON
GLOBAL GEOSPATIAL
INFORMATION MANAGEMENT

THE IMPLEMENTATION OF THE IGIF IN THE KINGDOM OF TONGA.

CONTENT

- 1. Introduction**
- 2. Background**
- 3. Implementation of UN-GGIM in Tonga**
- 4. Questions to Answer**
- 5. Examples of MGI in Tonga**

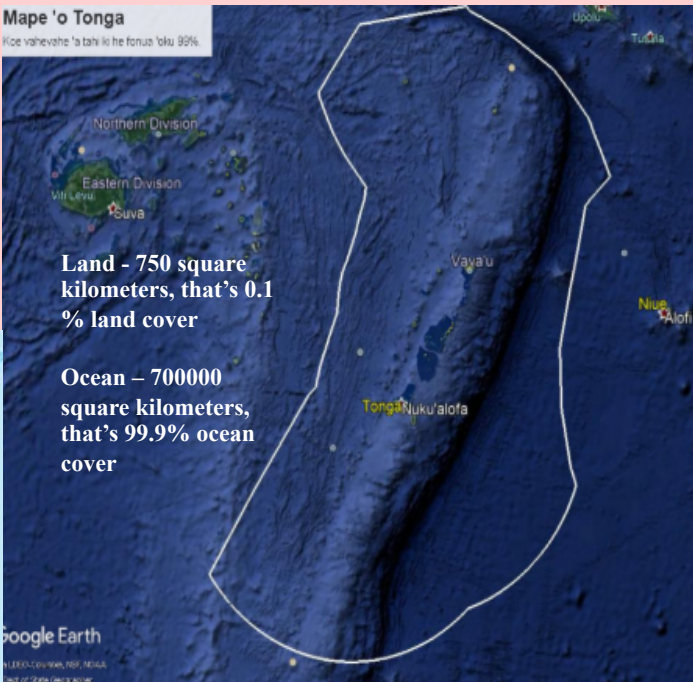
Mr Mafoa Penisoni
Ministry of Land and Natural Resources
Kingdom of Tonga

1

INTRODUCTION


Myself: Mafoa Penisoni

My Organization (Ministry of Land and Natural Resources)
– 6 division (Natural Recourses, Land Geospatial Information Systems, National Spatial Planning Authority, Land Administration, Surveying and Cooperate Services)

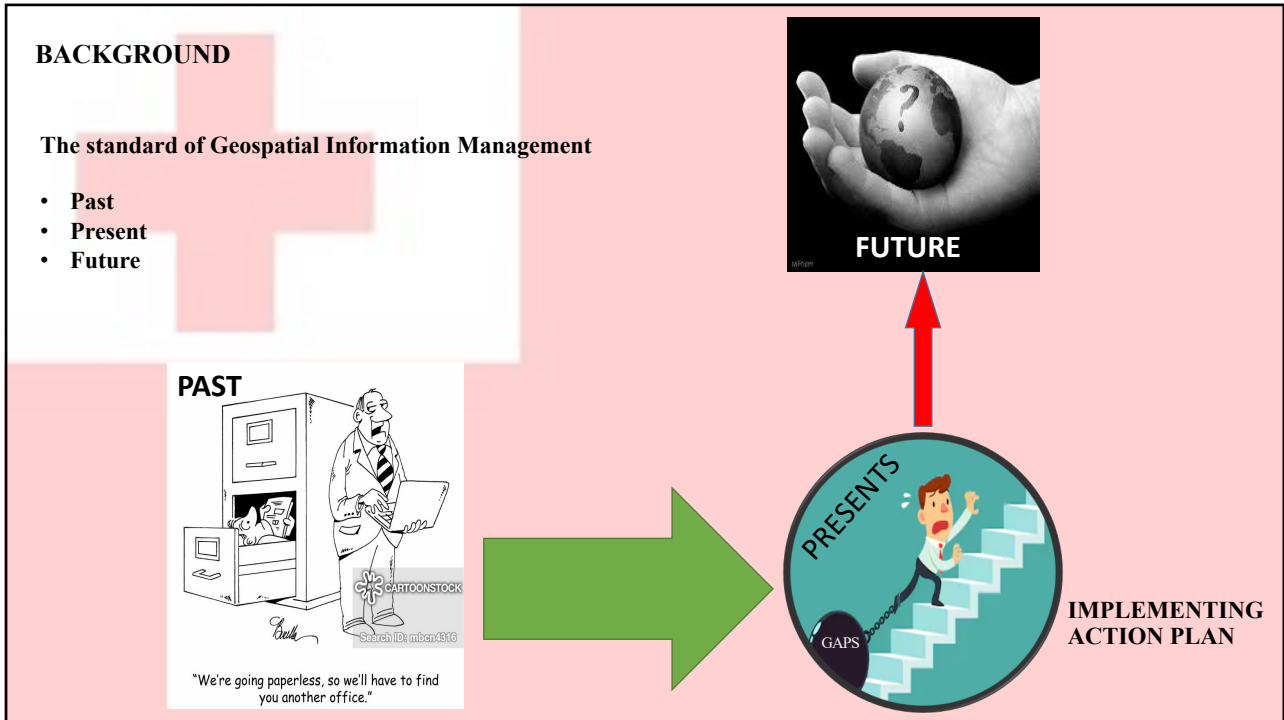


Land - 750 square kilometers, that's 0.1 % land cover

Ocean – 700000 square kilometers, that's 99.9% ocean cover



2



3

VISION

"A higher quality of life for all Tongans supported by accessible, accurate and reliable integrated geospatial information."

MISSION

"Promote and support coordination and collaboration to achieve an integrated geospatial information management and leverage it as a decision and sustainable solutions to national needs and opportunities."

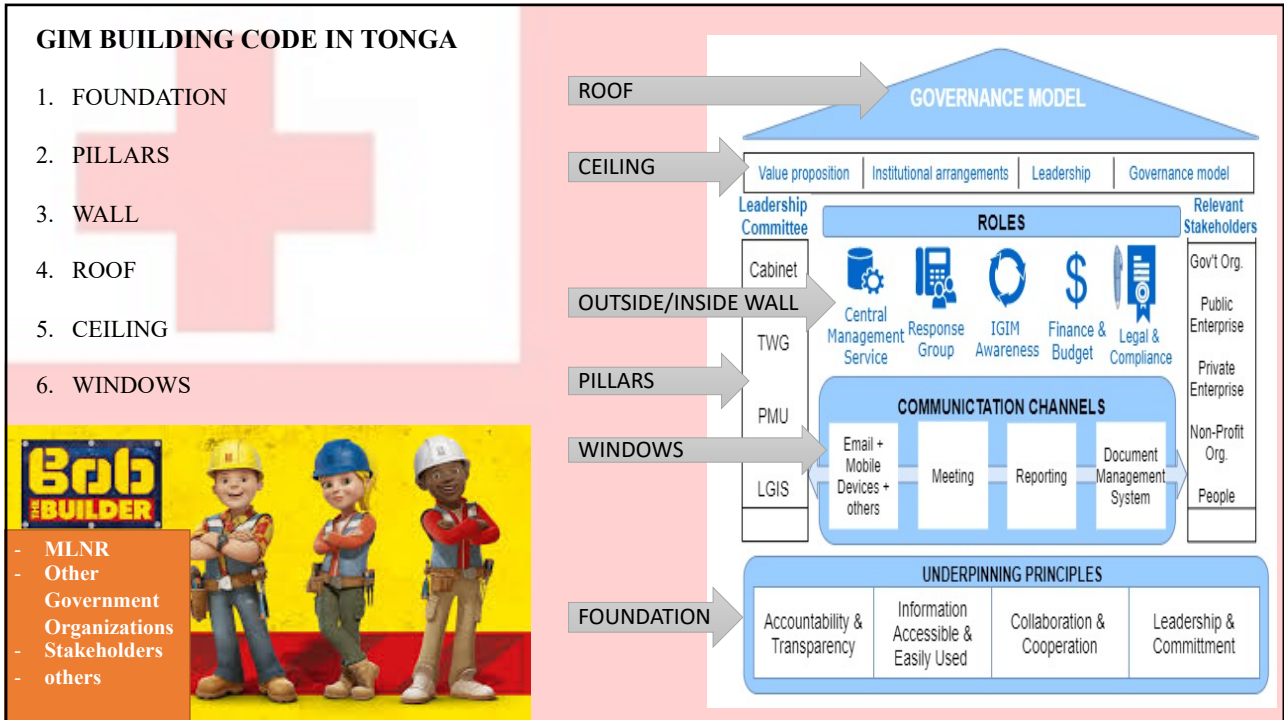
GOAL

1. Establish leadership and coordination necessary to deliver and manage an effective integrated geospatial information by 2020 - 2023
2. To develop geospatial guidelines and policy framework by 2020-2025 to promote data standards, sharing and accessibility.
3. To develop and modernise geodetic infrastructures and systems progressively each year to ensure the quality, alignment, interoperability and management of national geospatial information.
4. To increase the value of Land administration, Marine and Natural Resources geospatial information to attain national sustainable development objectives.
5. Develop a progressive sustainable national economic return benefit plan by 2020 – 2025 to create opportunities that enhances higher socio-economic quality of life for all.
6. Increase and sustain inclusive collaboration and cooperation of geospatial information users annually to build awareness, strengthen relationships and support geospatial information benefits.
7. To expand capacity development, initiate research and innovation of GIS application progressively with a focus on advancing emergency management, disaster risk reduction, and environmental monitoring.

IMPLEMENTATION OF UN-GGIM IN TONGA

VISION The efficient use of geospatial information by all countries to effectively measure, monitor and achieve sustainable social, economic and environmental development – leaving no one behind								
MISSION To promote and support innovation and provide the leadership, coordination and standards necessary to deliver integrated geospatial information that can be leveraged to find sustainable solutions for social, economic and environmental development.								
STRATEGIC DRIVERS National Development Agenda • National Strategic Priorities • National Transformation 2030 Goals • Community Expectations • Multilateral trade agreements • Transforming our World: 2030 Agenda for Sustainable Development • New Urban Agenda • Sendai Framework on Disaster Risk Reduction 2015 – 2030 • Addis Ababa Action Agenda • Small Island Developing States Accelerated Modalities of Action (SAMOA Pathway) • United Nations Framework Convention on Climate Change (Paris Agreement) • United Nations Ocean Conference: Call for Action								
UNDERPINNING PRINCIPLES								
Transparent and Accountable	Information Accessible and Easily Used	Strategic Enablement	Collaboration and Cooperation	Integrative solution	Sustainable and Valued	Leadership and Commitment		
GOALS								
Effective Geospatial Information Management	Increased Capacity, Capability, and Knowledge Transfer	Integrated Geospatial Information Systems and Services	Enhanced Stakeholder Engagement and Communication	International Cooperation and Partnerships Leveraged	Sustained Education and Training Programs	Economic Return on Investment	Enriched Societal Value and Benefits	
STRATEGIC PATHWAYS								
Governance and Institutions Value proposition Institutional arrangements Leadership Decision model	Legal and Policy Legislation Data protection and licensing Implementation and accountability Interdisciplinary and digital Legislation	Financial Investment and opportunities Business model Benefits realization	Data Data quality / data standards Data supply / data management Fundamental / potential data sharing	Innovation Process innovation and creativity Technology and technological advance	Standards Legal interoperability Technical interoperability Data interoperability	Partnerships Cross-sectoral and interdisciplinary cooperation Industry partnerships and joint ventures	Capacity and Education Professional development and workforce training Formal education Awareness raising	Communication and Engagement Monitoring and evaluation Integrated engagement strategies Stakeholder identification
Knowledge Decisions Development Society Economy Environment Users Citizens Access Technology Applications Value								

4



5

ACTION PLAN

CURRENT SITUATION: Geospatial Information is a “New Concept”.

GAPS:

1. Governance and Institution – little knowledge and experience
2. Data and Standards – what you see is what you get
3. Capacity and Education – Top priority
4. Data Sharing Technology – hard copy – print map/document and electronic – via email or flash driver.

WAY FORWARD:

- successfully Integrated GI.
- reduce gaps

Future
IGIM to achieve

- technology advancement
- enhance work processes
- better economic investment
- improve human capabilities capacity and education
- develop legal and policy framework

6

Q1. Why Tonga need IGIF – the strategic drivers

- Support
- collaboration/coordination
- achieve the goals/visions of strategic drivers and that of the SDGs

Q2. What is MLNR is doing to implement IGIF – the process, the work, the issues and challenges in developing your country-level Action Plan

- Establishment of the Action Plan and to be implemented – In April
- (process/work/issue - refer to summary)
- Other external factors: collaboration with key stakeholders, ensuring their continuous support - solution is creating socio-economic use case scenario that is most relevant to them (buy-in)

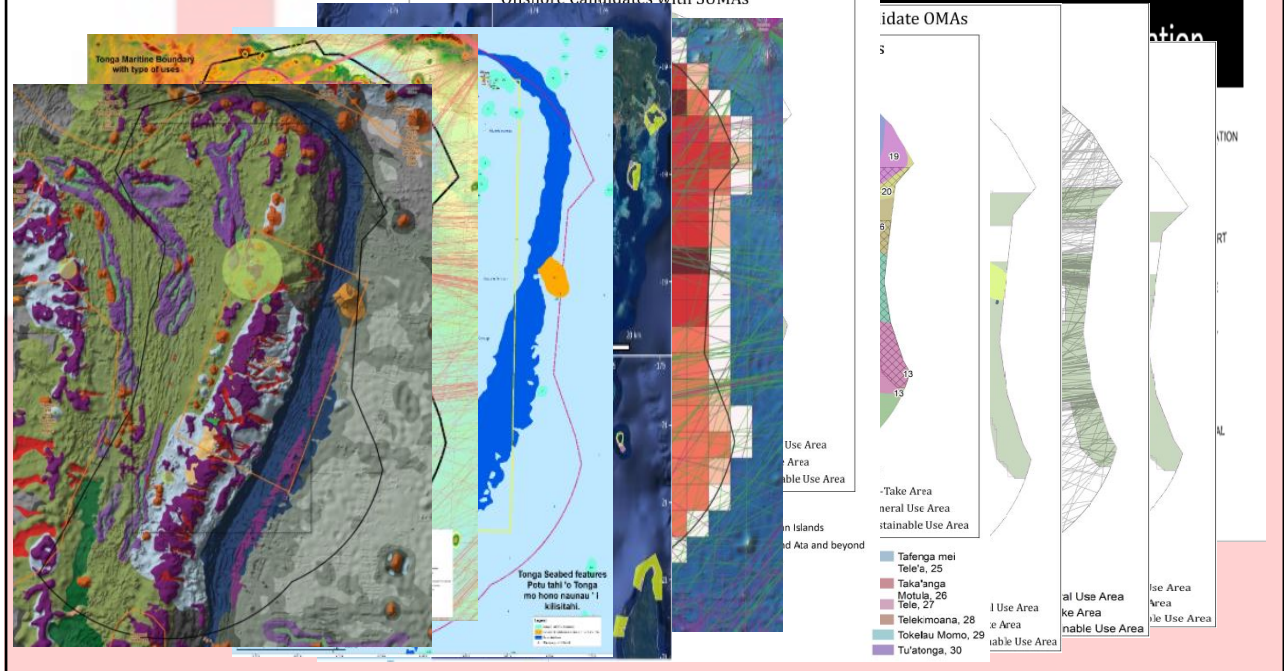
Q3: Where you are at this point in time – the progress and the anticipation.

- The Action Plan - complete the a draft, still discussing the budgeting and tasks for each activity.
- Internally with MLNR and brief and collaboration with external stakeholder is on-going at this stage - (inclusive measures).
- One-on-one meeting is still in the process, a national stakeholder workshop will be host in few days time.

Proof-read & Editing process will be the final stage.

7

Examples of LGI AND MGI



8

CONCLUSION



WE NEED



Reminder

The story: THE OLD LADY AND THE BUS DRIVER.

NOT PEANUT ONLY



9



THANK YOU



10